

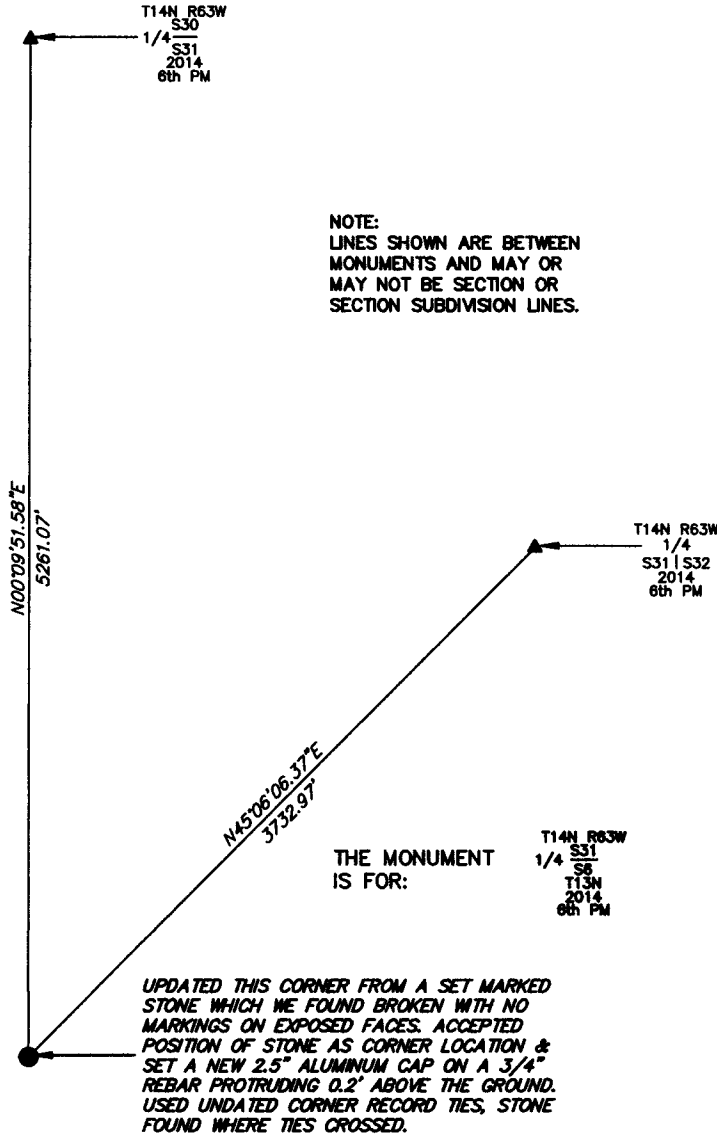
State of Wyoming Corner Record

CORNER PERPETUATION AND FILING ACT.

Regulations of the Board of Registration for Professional Engineers and Land Surveyors.)

Reverse side of this form may be used if more space is needed.

Record of original survey and citation of source of historic information (if corner is lost or obliterated). Description of corner monumentation evidence found and/or monument and accessories established to perpetuate the location of this corner. Sketch of relative location of monument, accessories, and reference points with course and distance to adjacent corner(s) (if determined in this survey). Method and rationale for reestablishment of lost or obliterated corner.

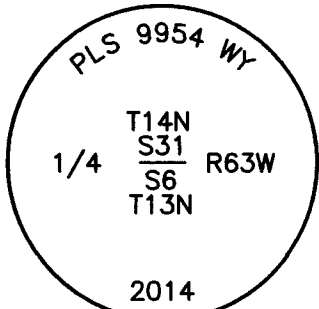


NOTE:
LINES SHOWN ARE BETWEEN
MONUMENTS AND MAY OR
MAY NOT BE SECTION OR
SECTION SUBDIVISION LINES.

UPDATED THIS CORNER FROM A SET MARKED
STONE WHICH WE FOUND BROKEN WITH NO
MARKINGS ON EXPOSED FACES. ACCEPTED
POSITION OF STONE AS CORNER LOCATION &
SET A NEW 2.5" ALUMINUM CAP ON A 3/4"
REBAR PROTRUDING 0.2" ABOVE THE GROUND.
USED UNDATED CORNER RECORD TIES, STONE
FOUND WHERE TIES CROSSED.

THE MONUMENT
IS FOR:

T14N R63W
1/4 S31
S6
T13N
2014
6th PM



THE MONUMENT IS MARKED

CORNER MONUMENT SYMBOLS

- RECORD IS FOR THIS CORNER MONUMENT.
- ▲ A RELATED CORNER OR WC MONUMENT.

SCALE 1"=1000'
(EXCEPT IN TRIVIAL CASES)
BEARINGS ARE RELATED TO WGS 84 WITH GPS OBSERVATIONS
DRAWN BY: SM
P.C. B. LOWREY
COUNTY: LARAMIE

Date of Field Work: 07/13/2014 Office Reference: _____

CROSS INDEX DIAGRAM

1	2	3	4	5	6	7	8	9	10	11	12	13	14	15	16	17	18	19	20	21	22	23	24	25	
A																									
B																									
C																									
D																									
E																									
F																									
G																									
H																									
J																									
K																									
L																									
M																									
N																									
O																									
P																									
Q																									
R																									
S																									
T																									
U																									
V																									
W																									
X																									
Y																									
Z																									

Firm/Agency, Address

UELS, LLC

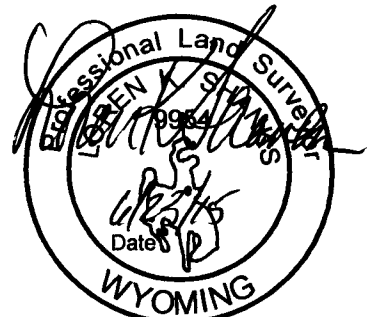
85 South 200 East

Vernal, Utah 84078

Telephone Number: 435-789-1017

This corner record was prepared by me or under my direction and supervision.

SEAL & SIGNATURE



RECP #: 670081

RECORDED 9/22/2015 AT 10:40 AM BK# 2465 PG# 89
Debra K. Lathrop, CLERK OF LARAMIE COUNTY, WY PAGE 1 OF 1

Corner Name: NORTH 1/4 CORNER OF SECTION 6 Section: 6 T 13N R 63W ; 6TH P.M. Cross Index No.: A-3